

## Coating : Coarse Tungsten Carbide

Lase Coarse Tungsten carbide is an extremely dense fully welded overlay containing large carbides fully embedded and wetted into a strong hard Nickel based matrix. It is extremely resistant to wear by abrasion under heavy load at low to medium temperatures with good resistance to impact.

### Typical applications include:

Crushing hammers

Wear plates

Sand valves

Security coatings

### Coating Properties

#### *Hardness*

Matrix: 500 – 600 Hv

Carbide 2000 – 2500 Hv

#### *Porosity:*

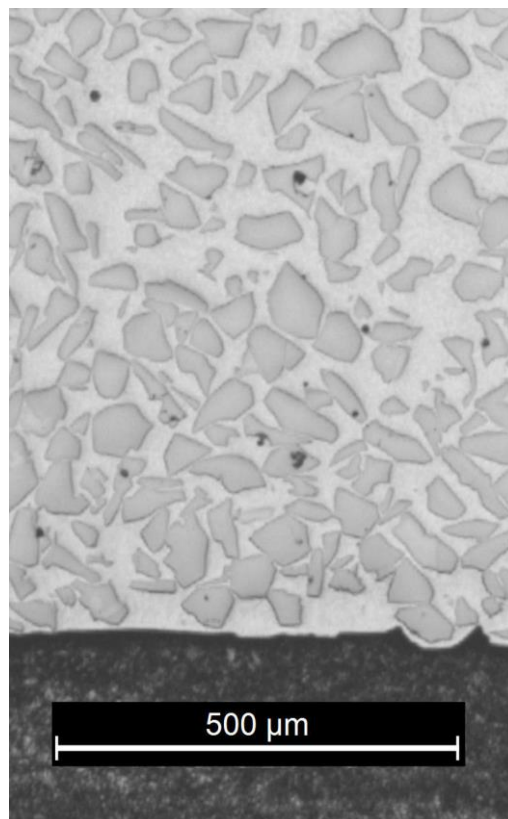
< .1%

#### *Typical application rate*

70 gm/min

#### *Coverage*

13kg/m<sup>2</sup>/mm



### Process Considerations

If, for the particular application, a crack free deposit is required it will probably be necessary to pre-heat the substrate to 300 degrees Celsius prior to applying the coating. Such applications might include situations where corrosion and fatigue are involved. Where no such problems exist the presence of cracks would not be expected to affect the abrasion resistance since the particles are so well embedded.